



IS 15778 : 2007

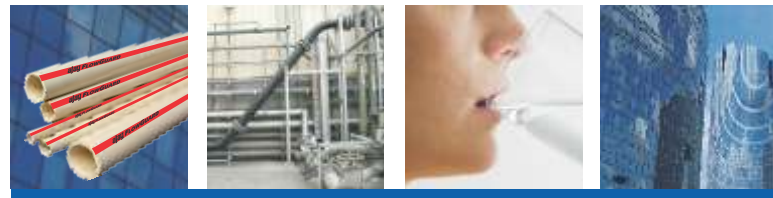


Ajay Industrial Corporation Ltd.

Since 1961



Plumbing
Life for

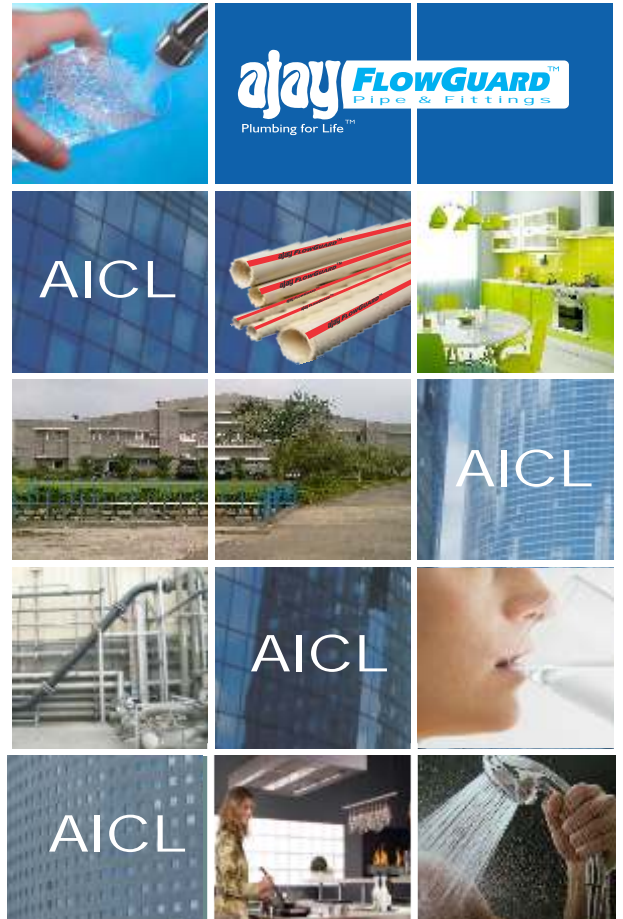


PIPES & FITTINGS

About us

Established in 1961, Ajay Industrial Corporation Ltd. has achieved the distinction of being the pioneer in manufacturing of pipes and fittings still carrying the oldest UPVC Pipe ISI license in the country and is today one of the leader in CPVC and UPVC Plumbing in the country. With almost 5 decades of experience in plastic processing, AICL is amongst the best in providing plumbing solutions.

The company is a licensee in India of LUBRIZOL INC. of USA (Formerly BF Goodrich) for the production of the world renowned FlowGuard branded products. AICL has been monumental in development of CPVC pipes & fittings market under Ajay FlowGuard and UPVC pipes and fittings market under Ajay GreenLine brands.



Why Ajay

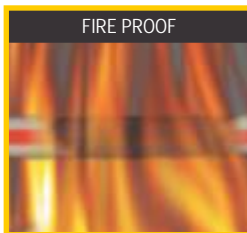
- 50 years old plastic products company
- Winning EEPC Award for export excellence since last five years
- Series of Best Exporter Award from Plex Council of India throughout 70's
- Oldest UPVC pipe ISI (BIS:4985) license holder in India
- Largest handpump company in the world
- Licensing agreement with Lubrizol in 2004
- 1st company to get Unicor Corrugator Technology in India
- 1st to get industry leading Cincinnati extrusion machines into India
- 1st to introduce reinforced suction and reinforced layflat hose in India
- 1st to use Theysohn m/c for CPVC extrusion



Total Plumbing Solution for Hot & Cold Water Application

The Ajay FlowGuard™ Advantages :

- Proven performance in plumbing application in the harshest of condition since 1956 (FlowGuard™ : recognized globally)
- Quality assured through stringent sample testing at independent laboratories.
- Very low lifetime ownership cost making the system very cost effective.
- Exceptional all weather corrosion resistance even against many corrosive liquids.
- Lowest bacterial growth.
- No scaling, pitting or leaching.
- Does not sustain or support combustion.
- Low thermal expansion.
- Temperature/pressure bearing capacity remains unaffected by UV exposure.
- Resistant to high levels of chlorine normally used to treat water in India.
- Good impact resistance.
- Easy and considerably fast installation with solvent cement compound jointing system.
- Consistent and reliable jointing with substantial saving in installation costs.



Standards & Approvals

- Approved By Bureau of Indian Standard is 15778 : 2007
- Also Complies to ASTM D 2846/F493
- ISO 14001:2004, ISO 9001:2008, OHSAS 18001:2007
- Approved by Central Public Works Department
- Certified by Shriram Institute For Industrial Research
- Certified by Central Institute of Plastics Engineering & Technology
- Approved by Central Building Research Institute-Roorkee
- Approved by Central Food Technology Research Institute-Mysore
- Approved by National Building Construction Corporation Limited
- Approved by Indian Railway Welfare Organisation
- Approved by Municipal Corporations of Greater Mumbai
- Approved by Military Engineering Services
- Approved by the Plumbing Consultant around the Country

(BIS)

(CPWD)

(SRI)

(CIPET)

(CBRI)

(CFTRI)

(NBCC)

(IRWO)

(BMC)

(MES)



products

CPVC Pipes & Fittings

Product	Item Code	Size	
		Inch	MM
PIPES SDR-11 (3 Mtr.)	FGCPSDR11315	1/2"	15
	FGCPSDR11320	3/4"	20
	FGCPSDR11325	1"	25
	FGCPSDR11332	1-1/4"	32
	FGCPSDR11340	1-1/2"	40
FGCPSDR11350	2"	50	
PIPES SDR-11 (5 Mtr.)	FGCPSDR11515	1/2"	15
	FGCPSDR11520	3/4"	20
	FGCPSDR11525	1"	25
	FGCPSDR11532	1-1/4"	32
	FGCPSDR11540	1-1/2"	40
FGCPSDR11550	2"	50	
PIPES SDR-13.5 (3 Mtr.)	FGCPSDR13315	1/2"	15
	FGCPSDR13320	3/4"	20
	FGCPSDR13325	1"	25
	FGCPSDR13332	1-1/4"	32
	FGCPSDR13340	1-1/2"	40
FGCPSDR13350	2"	50	
PIPES SDR-13.5 (5 Mtr.)	FGCPSDR13515	1/2"	15
	FGCPSDR13520	3/4"	20
	FGCPSDR13525	1"	25
	FGCPSDR13532	1-1/4"	32
	FGCPSDR13540	1-1/2"	40
FGCPSDR13550	2"	50	
CPVC MTA	FGCFMIAF0015	1/2"	15
	FGCFMIAF0020	3/4"	20
	FGCFMIAF0025	1"	25
	FGCFMIAF0032	1-1/4"	32
	FGCFMIAF0040	1-1/2"	40
FGCFMIAF0050	2"	50	
FGCFMIAF2015	3/4"x1/2"	20x15	
CPVC FTA	FGCFFIAP0015	1/2"	15
	FGCFFIAP0020	3/4"	20
	FGCFFIAP0025	1"	25
	FGCFFIAP0032	1 1/4"	32
	FGCFFIAP0040	1 1/2"	40
FGCFFIAP0050	2"	50	
FGCFFIAP2015	3/4" x 1/2"	20x15	
ELBOW/REDUCING ELBOW 90°	FGCFELB90015	1/2"	15
	FGCFELB90020	3/4"	20
	FGCFELB90025	1"	25
	FGCFELB90032	1 1/4"	32
	FGCFELB90040	1 1/2"	40
	FGCFELB90050	2"	50
FGCFELB02015	3/4" x 1/2"	20x15	
FGCFELB02515	1" x 1/2"	25x15	
FGCFELB02520	1" x 3/4"	25x20	
ELBOW 45°	FGCFELB45015	1/2"	15
	FGCFELB45020	3/4"	20
	FGCFELB45025	1"	25
	FGCFELB45032	1-1/4"	32
	FGCFELB45040	1-1/2"	40
	FGCFELB45050	2"	50
SOCKET/REDUCING SOCKET	FGFCFUP00015	1/2"	15
	FGFCFUP00020	3/4"	20
	FGFCFUP00025	1"	25
	FGFCFUP00032	1-1/4"	32
	FGFCFUP00040	1-1/2"	40
	FGFCFUP00050	2"	50
	FGFCFUP02015	3/4" X 1/2"	20X15
FGFCFUP02515	1" X 1/2"	25X15	
FGFCFUP02520	1" X 3/4"	25X20	
FGFCFUP03225	1-1/4" x 1"	32x25	
CROSS	FGFCFCROSS015	1/2"	15
	FGFCFCROSS020	3/4"	20
TANK NIPPLE	FGCFINPLO015	1/2"	15
	FGCFINPLO020	3/4"	20
	FGCFINPLO025	1"	25
	FGCFINPLO032	1-1/4"	32
	FGCFINPLO040	1-1/2"	40
FGCFINPLO050	2"	50	

Product	Item Code	Size	
		Inch	MM
TEE	FGCFTEE00015	1/2"	15
	FGCFTEE00020	3/4"	20
	FGCFTEE00025	1"	25
	FGCFTEE00032	1-1/4"	32
	FGCFTEE00040	1-1/2"	40
FGCFTEE00050	2"	50	
END CAP	FGCFECAP0015	1/2"	15
	FGCFECAP0020	3/4"	20
	FGCFECAP0025	1"	25
	FGCFECAP0032	1-1/4"	32
	FGCFECAP0040	1-1/2"	40
FGCFECAP0050	2"	50	
BALL VALVE (1Pcs)**	TGCBVALVE015	1/2"	15
	TGCBVALVE020	3/4"	20
	TGCBVALVE025	1"	25
	TGCBVALVE032	1-1/4"	32
	TGCBVALVE040	1-1/2"	40
TGCBVALVE050	2"	50	
BALL VALVE (2Pcs)*	TGCBVSPD015	1/2"	15
	TGCBVSPD020	3/4"	20
	TGCBVSPD025	1"	25
	TGCBVSPD032	1-1/4"	32
	TGCBVSPD040	1-1/2"	40
TGCBVSPD050	2"	50	
UNION	FGCFUNION015	1/2"	15
	FGCFUNION020	3/4"	20
	FGCFUNION025	1"	25
	FGCFUNION032	1 1/4"	32
	FGCFUNION040	1 1/2"	40
FGCFUNION050	2"	50	
TRANSITION BUSHING	FGCFBUSH015	1/2"	15
	FGCFBUSH020	3/4"	20
	FGCFBUSH025	1"	25
	FGCFBUSH030	1-1/4"	32
	FGCFBUSH040	1-1/2"	40
FGCFBUSH050	2"	50	
PIPE CLAMP PLASTIC	TGCCLAMPPL15	1/2"	15
	TGCCLAMPPL20	3/4"	20
PIPE CLAMP METAL	TGCCLAMPMT15	1/2"	15
	TGCCLAMPMT20	3/4"	20
	TGCCLAMPMT25	1"	25
	TGCCLAMPMT32	1 1/4"	32
	TGCCLAMPMT40	1 1/2"	40
	TGCCLAMPMT50	2"	50
REDUCER BUSHING	FGCFBUS02015	3/4" x 1/2"	20x15
	FGCFBUS02515	1" x 1/2"	25x15
	FGCFBUS02520	1" x 3/4"	25x20
	FGCFBUS03215	1-1/4" x 1/2"	32x15
	FGCFBUS03220	1-1/4" x 3/4"	32x20
	FGCFBUS03225	1-1/4" x 1"	32x25
	FGCFBUS04015	1-1/2" x 1/2"	40x15
	FGCFBUS04020	1-1/2" x 3/4"	40x20
	FGCFBUS04025	1-1/2" x 1"	40x25
	FGCFBUS04032	1-1/2" x 1-1/4"	40x32
	FGCFBUS05015	2" x 1/2"	50x15
FGCFBUS05020	2" x 3/4"	50x20	
FGCFBUS05025	2" x 1"	50x25	
FGCFBUS05032	2" x 1-1/4"	50x32	
FGCFBUS05040	2" x 1-1/2"	50x40	
REDUCING TEE	FGCFTEE02015	3/4" x 3/4" x 1/2"	20x20x15
	FGCFTEE02515	1" x 1" x 1/2"	25x25x15
	FGCFTEE02520	1" x 1" x 3/4"	25x25x20
	FGCFTEE03215	1 1/4" x 1 1/4" x 1/2"	32x32x15
	FGCFTEE03220	1 1/4" x 1 1/4" x 3/4"	32x32x20
	FGCFTEE03225	1 1/4" x 1 1/4" x 1"	32x32x25
	#FGCFTEE04015	1 1/2" x 1 1/2" x 1/2"	40x40x15
	#FGCFTEE04020	1 1/2" x 1 1/2" x 3/4"	40x40x20
	#FGCFTEE04025	1 1/2" x 1 1/2" x 1"	40x40x25
	#FGCFTEE04032	1 1/2" x 1 1/2" x 1 1/4"	40x40x32
	#FGCFTEE05015	2" x 2" x 1/2"	50x50x15
	#FGCFTEE05020	2" x 2" x 3/4"	50x50x20
	#FGCFTEE05025	2" x 2" x 1"	50x50x25
	#FGCFTEE05032	2" x 2" x 1 1/4"	50x50x32
	#FGCFTEE05040	2" x 2" x 1 1/2"	50x50x40

Product	Item Code	Size	
		Inch	MM
BRASS TEE	FGCTEE01515	1/2" x 1/2" x 1/2"	15x15x15
	FGCTEE02015	3/4" X 3/4" x 1/2"	20x20x15
	FGCTEE02515	1" X 1" X 1/2"	25x25x15
BRASS ELBOW 90° Without Ear	FGCTELBW1515	1/2"	15x15
	FGCTELBW2015	3/4" x 1/2"	20x15
BRASS ELBOW 90°	FGCTELB01515	1/2" x 1/2"	15x15
	FGCTELB02015	3/4" x 1/2"	20x15
	FGCTELB02020	3/4" x 3/4"	20x20
	FGCTELB02515	1" x 1/2"	25x15
	FGCTELB02520	1" x 3/4"	25x20
	FGCTELB02525	1" x 1"	25x25
FGCTELB03232	1 1/4" x 1 1/4"	32x32	
BRASS MTA UNION	FGCTMIAU0015	1/2"	15
	FGCTMIAU0020	3/4"	20
	FGCTMIAU0025	1"	25
	FGCTMIAU0032	1-1/4"	32
	FGCTMIAU0040	1-1/2"	40
FGCTMIAU0050	2"	50	
BRASS MTA FIXED	FGCTMIAF0015	1/2"	15
	FGCTMIAF0020	3/4"	20
	FGCTMIAF0025	1"	25
	FGCTMIAF0032	1-1/4"	32
	FGCTMIAF0040	1-1/2"	40
FGCTMIAF0050	2"	50	
FGCTMIAF2015	3/4" X 1/2"	20X15	
BRASS FTA UNION	FGCTFAU0015	1/2"	15
	FGCTFAU0020	3/4"	20
	FGCTFAU0025	1"	25
	FGCTFAU0032	1-1/4"	32
	FGCTFAU0040	1-1/2"	40
FGCTFAU0050	2"	50	
BRASS FTA FIXED	FGCTFAF0015	1/2"	15
	FGCTFAF0020	3/4"	20
	FGCTFAF0025	1"	25
	FGCTFAF0032	1 1/4"	32
	FGCTFAF0040	1 1/2"	40
FGCTFAF0050	2"	50	
FGCTFAF2015	3/4" X 1/2"	20X15	
FGCTFAF2515	1 x 1/2"	25x15	
*STEP OVER BEND	FGCFSIPBD015	1/2"	15
	FGCFSIPBD020	3/4"	20
	FGCFSIPBD025#	1"	25
	FGCFSIPBD032#	1 1/4"	32
	FGCFSIPBD040	1- 1/2"	40
FGCFSIPBD050	2"	50	
END PLUG	TGCFEPLUG015	1/2"	15
	TGCFEPLUG020	3/4"	20
*FABRICATED LONG BEND	FGCFLNGBD0015	1/2"	15
	FGCFLNGBD0020	3/4"	20
	FGCFLNGBD0025	1"	25
	FGCFLNGBD0032	1-1/4"	32
	FGCFLNGBD0040	1-1/2"	40
FGCFLNGBD0050	2"	50	
MABT (HEXAGONAL CPVC TRANS MTA)	FGCTMIAH0015	1/2"	15
	FGCTMIAH0020	3/4"	20
	FGCTMIAH0025	1"	25
	FGCTMIAH0032	1-1/4"	32
	FGCTMIAH0040	1-1/2"	40
	FGCTMIAH0050	2"	50
	FGCTMIAH2015	3/4"x1/2"	20x15
FABT (HEXAGONAL CPVC TRANS FTA)	FGCTFAH0015	1/2"	15
	FGCTFAH0020	3/4"	20
	FGCTFAH0025	1"	25
	FGCTFAH0032	1-1/4"	32
	FGCTFAH0040	1-1/2"	40
FGCTFAH0050	2"	50	
FGCTFAH2015	3/4"x1/2"	20x15	
SOLVENT CEMENT	TGCP SOLVNT15		15 ML
	TGCP SOLVNT29		29 ML
	TGCP SOLVNT59		59 ML
	TGCP SOLVNT118		118 ML
	TGCP SOLVNT237		237 ML
	TGCP SOLVNT473		473 ml
TGCP SOLVNT946		946 ML	

Also AVAILABLE Lead Free UPVC Pipes and Fittings completely compatible with Pipes & Fittings

*Some of the Brass Items available with or without nickle coating



Total Plumbing Solution for Industrial & Commercial Applications

Product	Item Code	Size	
		Inch	MM
	FGCPSC400365	2-1/2"	65
	FGCPSC400380	3"	80
	FGCPSC403100	4"	100
	FGCPSC403150	6"	150
	FGCPSC800365	2-1/2"	65
	FGCPSC800380	3"	80
	FGCPSC803100	4"	100
	FGCPSC803150	6"	150
	TGCBUNION065	2-1/2"	65
	TGCBUNION080	3"	80
	TGCBUNION100	4"	100
	TGCBVALVE065	2-1/2"	65
	TGCBVALVE080	3"	80
	TGCBVALVE100	4"	100
	TGC8ELB45065	2-1/2"	65
	TGC8ELB45080	3"	80
	TGC8ELB45100	4"	100
	TGC8ELB45150	6"	150

Product	Item Code	Size	
		Inch	MM
	FGC8TEE00065	2-1/2"	65
	FGC8TEE00080	3"	80
	FGC8TEE00100	4"	100
	TGC8TEE00150	6"	150
	FGC8ELB90065	2-1/2"	65
	FGC8ELB90080	3"	80
	FGC8ELB90100	4"	100
	TGC8ELB90150	6"	150
	FGC8CUP00065	2-1/2"	65
	FGC8CUP00080	3"	80
	FGC8CUP00100	4"	100
	FGC8CUP00150	6"	150
	FGC8ECP00065	2-1/2"	65
	FGC8ECP00080	3"	80
	FGC8ECP00100	4"	100
	FGC8ECP00150	6"	150
	FGC8FTA00065	2-1/2"	65
	FGC8FTA00080	3"	80
	FGC8FTA00100	4"	100

Product	Item Code	Size	
		Inch	MM
	FGC8MTAF0065	2-1/2"	65
	FGC8MTAF0080	3"	80
	FGC8MTAF0100	4"	100
	FGC8ISFL0025	1"	25
	FGC8ISFL0032	1 1/4"	32
	FGC8ISFL0040	1 1/2"	40
	FGC8ISFL0050	2"	50
	FGC8ISFL0065	2-1/2"	65
	FGC8ISFL0080	3"	80
	TGC8ISFL0100	4"	100
	FGC8BU006532	2 1/2" X 1 1/4"	65X32
	FGC8BU006540	2-1/2" X 1-1/2"	65X40
	FGC8BU006550	2-1/2" X 2"	65X50
	FGC8BU008040	3" X 1-1/2"	80X40
	FGC8BU008050	3" X 2"	80X50
	FGC8BU009065	3" X 2-1/2"	80X65
	FGC8BU10050	4" X 2"	100X50
	FGC8BU10065	4" X 2-1/2"	100X65
	FGC8BU10080	4" X 3"	100X80
	TGC8BU15080	6" X 3"	150X80
	TGCPINDSL473		473ml
	TGCPINDSL946		946ml
	TGPRIMERO473		473ml
	TGPRIMERO946		946ml

Products Description

All pipes and fittings are manufactured using CPVC compound with Cell Class 234478 defined by ASTM D1784 with Design Stress of 2000 PSI and Maximum service temperature of 2000F

- Pipe : Comply with the requirements of ASTM F441 in Schedule 40 and 80 dimensions.
- Availability : 2 1/2", 3", 4" and 6" (1/2", 3/4", 1", 1 1/4", 1 1/2" and 2" also available against order)
- Fittings : as per ASTM F439 (Schedule 80 Socket)
- Availability : 2 1/2", 3", 4" and 6" (1/2", 3/4", 1", 1 1/4", 1 1/2" and 2" also available against order)
- Primer / Solvent Cement : ASTM F656 and ASTM F493 respectively.

Application

Hot and Cold Water Plumbing (Main Lines and Loop Lines), Plumbing system for Industrial Chemicals in process industries such as :

- Residential & Commercial buildings
- Chemical Processing
- Metal Treatment
- Fertilizer Mining
- Food and Beverage
- Industrial Plating
- Pulp and Paper
- Chloro-alkali
- Waste-Water Treatment
- De-ionise Water
- Chemical Drainage

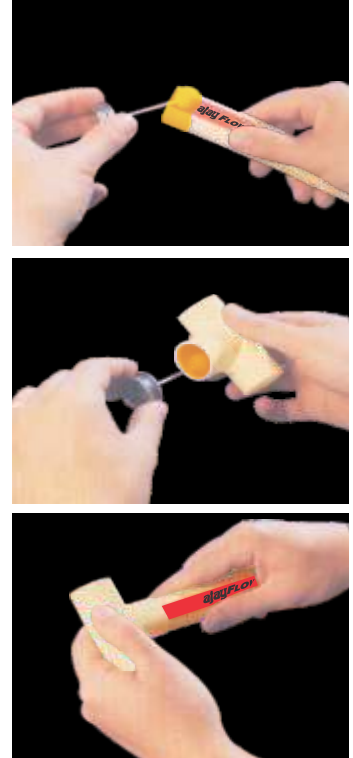
Our System Offers

- Tremendous Durability
- Enormous Cost Saving
- Extraordinary Safety
- Enviably Reliability
- Unparalleled Performance

Ajay's Guidelines for Installation

- Cut pipe straight (very important). This will allow pipe to bottom into the socket.
- Remove burr (shaving), use clean dry cloth or knife. Do not use abrasive material.
- Clean pipe and fitting & ensure no dirt, grease or any other foreign matter.
- Check dry fit. Pipe should easily go into the socket 1/3 to 2/3 of the way before any resistance is felt. This is commonly referred to as interference fit. If pipe goes to the bottom of the fitting without any resistance (interference) ensure fitting is correct size. If it is not correct size get another fitting.
- Apply a thin coat of cement into the fittings socket and a full even coat on the pipe to the depth of socket bottom Do not puddle cement in socket.
- Insert pipe into the socket quickly while cement is still fluid (wet), if cement has dried, re-coat pipe and fitting. Twist pipe turn, this will allow cement to cover any dry spot. Make sure pipe goes all the way to the bottom of the fitting.
- Hold pipe and fitting together(30 second) to make sure pipe does not push out.
- Wipe off excess cement with clean dry cloth.
- Allow cement to cure before applying water (fluid) pressure. Cure time is dependent upon temperature, humidity etc however under normal conditions, allow 24 hours cure time.
- For sizes above 2 inch ajay recommends jointing with purple primer & Heavy duty gray solvent cement.
- <http://www.youtube.com/watch?v=CcvKfh7yttg>

Jointing Procedure

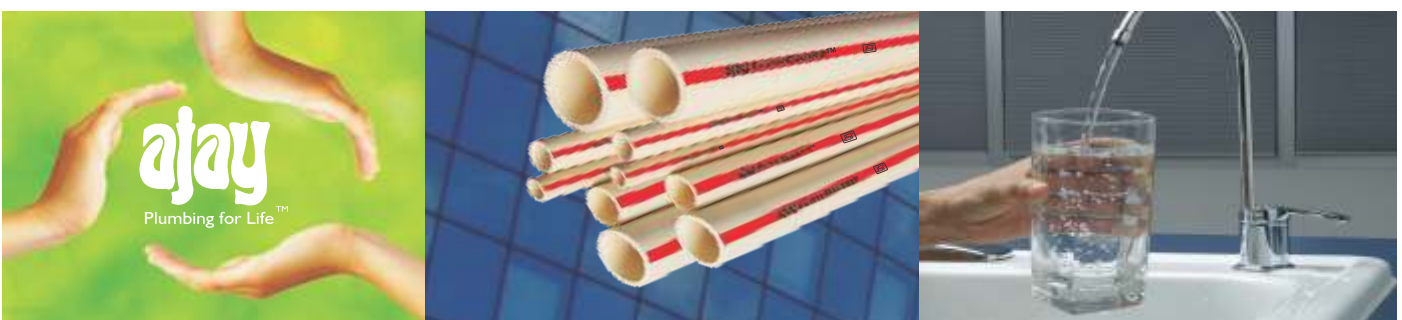


Outside Diameter and Wall Thickness of SDR 11 & SDR 13.5 Plastic CPVC Pipes as per IS:15778-07

Normal Size		Avg. OD MM		Tolerance	Min. Wall Thickness MM		Tolerance
Inch	MM	SDR 11	SDR 13.5	MM	SDR 11	SDR 13.5	MM
1/2"	15	15.90	15.90	+/-0.10	1.70	1.40	+0.50
3/4"	20	22.20	22.20	+/-0.10	2.03	1.70	+0.50
1"	25	28.60	28.60	+/-0.10	2.60	2.12	+0.50
1-1/4"	32	34.90	34.90	+/-0.10	3.20	2.60	+0.50
1-1/2"	40	41.30	41.30	+/-0.10	3.80	3.10	+0.50
2"	50	54.00	54.00	+/-0.10	4.90	4.00	+0.60

Approximate Number of Joints That Can Be Made With Solvent Cement

Normal Size	Inch	1/2"	3/4"	1"	1-1/4"	1-1/2"	2"
	MM	15	20	25	32	40	50
Approx. Number of Joints per Can	50 ml	35	23	15	14	10	07
	118ml	82	55	34	33	23	17
	237ml	164	110	68	66	46	34
	473ml	328	220	136	132	92	68
	946ml	656	440	272	264	184	136



SCH 40 & SCH 80 Dimensional Chart

	Pipe Size	2 ½"	3"	4"	6"
AVG. DD (mm)	CPVC SCH 40	73.00	88.90	114.30	168.30
	CPVC SCH 80	73.00	88.90	114.30	168.00
AVG. THICKNESS (mm)	CPVC SCH 40	5.16	5.49	6.02	7.11
	CPVC SCH 80	7.01	7.62	8.56	10.97

Pressure Vs Temperature Rating Chart for CPVC 4120 CTS & CPVC SCH 40/80 System

Operating Temperature	SDR 11	SDR 13.5	Pipe Size	2 ½"	3"	4"	6"
	½", ¾", 1" 1-1/4", 1-1/2", 2"	½", ¾", 1" 1-1/4", 1-1/2", 2"					
23°C	27.60	21.80	CPVC SCH 40 CPVC SCH 80	21.09 29.53	18.28 26.01	15.47 22.50	12.66 19.69
27°C	27.60	21.80	CPVC SCH 40 CPVC SCH 80	21.09 29.53	18.28 26.01	15.47 22.50	12.66 19.69
32°C	25.12	19.80	CPVC SCH 40 CPVC SCH 80	19.19 26.87	16.64 23.67	14.08 20.47	11.52 17.91
38°C	22.65	17.90	CPVC SCH 40 CPVC SCH 80	17.30 24.21	14.99 21.33	12.68 18.45	10.38 16.14
43°C	20.30	16.05	CPVC SCH 40 CPVC SCH 80	16.24 22.74	14.08 20.03	11.91 17.32	9.74 15.16
49°C	18.00	14.20	CPVC SCH 40 CPVC SCH 80	13.71 19.19	11.88 16.91	10.05 14.62	8.23 12.80
54°C	15.90	12.55	CPVC SCH 40 CPVC SCH 80	13.08 18.31	11.33 16.13	9.59 13.95	7.85 12.21
60°C	13.80	10.90	CPVC SCH 40 CPVC SCH 80	10.55 14.77	9.14 13.01	7.73 11.25	6.33 9.84
66°C	12.50	9.81	CPVC SCH 40 CPVC SCH 80	9.91 13.88	8.59 12.23	7.27 10.57	5.95 9.25
71°C	11.04	8.72	CPVC SCH 40 CPVC SCH 80	8.44 11.81	7.31 10.41	6.19 9.00	5.06 7.87
77°C	9.00	7.09	CPVC SCH 40 CPVC SCH 80	6.75 9.45	5.85 8.32	4.95 7.20	4.05 6.30
82°C	6.80	5.50	CPVC SCH 40 CPVC SCH 80	5.27 7.38	4.57 6.50	3.87 5.62	3.10 4.32
93°C	5.52	4.36	CPVC SCH 40 CPVC SCH 80	4.22 5.91	3.66 5.20	3.09 4.50	2.53 3.94

Ajay Fowguard SDR 11 Pipe and Fitting can withstand a 10 kg/cm² pressure test at 99°C for 48 hours. At 82°C, CPVC withstands a pressure of 26 kg/cm² for 4 hrs and a pressure of 37 kg/cm² for 6 minutes.

Pressure rating as per Indian Standard 15778 : 2007.

Recommended Horizontal Support Spacing (Distance between pipe clamps)

Normal Pipe Size		Pipe Size	23°C		38°C		60°C		80°C	
INCH	MM		FT.	MT.	FT.	MT.	FT.	MT.	FT.	MT.
1/2"	15	SDR 11/ SDR 13.5	4.0	1.22	4.0	1.22	3.5	1.07	3	0.92
3/4"	20	SDR 11/ SDR 13.5	5.0	1.53	4.5	1.37	4.0	1.22	3	0.92
1"	25	SDR 11/ SDR 13.5	5.5	1.68	5.0	1.53	4.5	1.37	3	0.92
1-1/4"	32	SDR 11/ SDR 13.5	6.0	1.83	5.5	1.68	5.0	1.53	4	1.22
1-1/2"	40	SDR 11/ SDR 13.5	6.5	1.98	6.0	1.83	5.5	1.68	4	1.22
2"	50	SDR 11/ SDR 13.5	7.5	2.29	7.0	2.14	6.5	1.98	4	1.22
2 ½"	60	SCH40	7.0	2.13	7.0	2.13	6.0	1.82	3.5	1.06
		SCH80	7.5	2.86	7.5	2.86	6.5	1.98	4.	1.22
3"	75	SCH40	7.0	2.13	7.0	2.13	6.0	1.82	3.5	1.06
		SCH80	8.0	2.59	8.0	2.59	7.0	2.13	4	1.22
4"	100	SCH40	7.5	2.86	7.5	2.86	6.5	1.98	4	1.22
		SCH80	9.0	2.74	9.0	2.74	7.5	2.86	4.5	1.37
6"	150	SCH40	8.5	2.59	8.0	2.59	7.0	2.13	4.5	1.37
		SCH80	10.0	3.04	9.5	2.89	8.0	2.59	5.0	1.52

Note: Vertical CPVC piping should be supported at each floor and should have a mid-story guide, unless thermal expansion design call for other provision.

Environment
Friendly

Proven
Service
Life

Very High
Corrosion
Resistance

Minimal
Life Time
Cost

Maintenance
Free

For All Installations

✓ Do's

- Install according to Ajay's Installation instructions and manual and follow recommended safe work practices.
- Keep Pipe and Fittings in original packaging until needed and store pipes in covered areas.
- Use tools designed for use with plastic pipe and fittings.
- Take correct precautions while installing pipes and fittings above 2" in accordance with Ajay recommendations.
- Remove dirt from pipe & fittings. Clean pipe & fittings with clean cloth.
- Cut off min. 25 mm beyond the edge of the crack in case any crack is discovered on the pipe.
- Cut the pipe as square (perpendicular) as possible before making a joint.
- Deburr & Bevel: Ensure no sharp edges in contact with the fittings surface while inserting the pipe.
- Take correct precautions while installing with solar water heaters & boilers in accordance with Ajay recommendations and check dry fitment.
- Use a suitable applicator of half pipe OD.
- First apply five revolution of solvent cement on pipe then five revolution on fitting.
- Leave the uncoated surface.
- Assemble quickly after applying solvent cement.
- Rotate the pipe 90° to 180° to spread the CPVC/PVC Solvent Cement evenly in the joint while pushing the Pipe into Fitting & hold for 30 seconds.
- Ensure proper alignment of pipe & fitting to avoid stress on the joints.
- Ensure installation is done in such a way that there are no chances of air entrapment.
- Provide Vertical & Horizontal Supports as recommended.
- Use Teflon tapes only as thread sealant.
- Insulation hot water pipes exposed to the atmosphere.
- Always conduct hydraulic pressure testing after installation to detect any leaks and faults. Wait for appropriate cure time before pressure testing. Fill lines slowly and bleed air from the system prior to pressure testing.

✗ Don'ts

- Do not Use Metal Hooks or Nails to support/hold or put pressure on the pipes. Do not use straps & hangers with rough or sharp edges. Do not tighten the straps over the pipes.
- Never expose the pipe to Open Flame while trying to bend it.
- Do not drop pipes on edges from heights. Do not drop heavy objects on pipes or walk on pipes.
- Do not use Fusion Compound for PVC or any other plastics for joining CPVC pipes & Fittings.
- Do not dilute the Fusion Compound with Thinners/ MTO or any other liquid etc.
- Do not use air or gases for pressure testing.
- Do not use any other petroleum or solvent-based sealant, adhesive, lubricant or fire stop material on CPVC/PVC pipes and fittings.
- Do not use CPVC/PVC Pipes & Fittings for pneumatic applications.
- Do not use plastic threaded fittings for hot water above 60°C.

Credence advt. #9313543863

Product Catalogue Sept. - 2012



Authorized Distributor/Dealer:

Create Your
Impression

Manufactured and Marketed by :

ajay industrial corporation ltd.

(5 Decades of Excellence in Plastic Processing)

Central Mktg. Office: B-II/29, Mohan Co-Operative Industrial Estate, Badarpur Border, New Delhi-110 044 (India)

Tel. : 011-6548 4046, 4167 7253 • Fax : 011-4167 7252

E-mail : info@ajaypipes.com | URL : www.ajaypipes.com

Zonal Offices :

Andhra Pradesh : 9390055950 • Assam & N. E. : 9333115581 • Bihar : 9334641223 • Chhattisgarh : 9300831451
Delhi & NCR : +91 11 65484046, 41677253 • Gujrat : 9375761124 • Haryana : 9313641134 • Punjab : 9317558966
Jharkhand : 9334641223 • Kerala : 9349983263 • Madhya Pradesh : 9303017008 • Mumbai : 9323691007
Rest of Maharashtra : 9370520007 • Rajasthan : 9314851772 • Tamil Nadu : 9366620020
Uttar Pradesh : 9305003099 • West Bengal : 9333115581 • Karnataka : 9343385242